

Eclipse Tutorial

As mentioned in the overview document sent to you before, this empirical study is supposed to be performed in the Eclipse 3.2.2 environment. Furthermore, as mentioned in that document, all the developers in this study are provided with an implementation project in which the concept should be implemented and two sample applications that actually implement the concept of interest. In this tutorial, we aim to describe the basic tasks in the Eclipse environment that developers will perform during this study:

- 1) Importing the projects into the workspace.
- 2) Running the projects.
- 3) Searching the projects.

One can refer to the following page for more information about using the Eclipse environment:

<http://help.eclipse.org/help32/index.jsp?topic=/org.eclipse.jdt.doc.user/gettingStarted/qs-BasicTutorial.htm>

1. Importing the Projects into the Workspace

- 1) Unzip the implementation project and the two sample applications into a local folder on your computer (e.g., 'C:\FUDA').
- 2) Run the Eclipse 3.2.2 and select 'C:\FUDA' as the workspace path as shown in Figure 1.

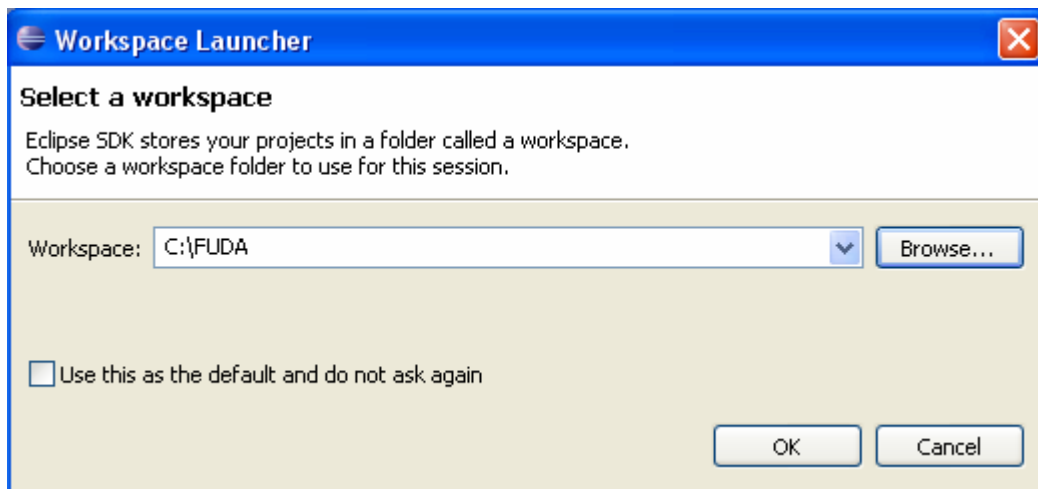


Figure 1- Eclipse workspace launcher

- 3) Right click in the 'Package Explorer' view and select the 'Import...' command from the opened context menu (Figure 2) or you can select the 'Import...' command from the menu 'File' in the main menu of the Eclipse.

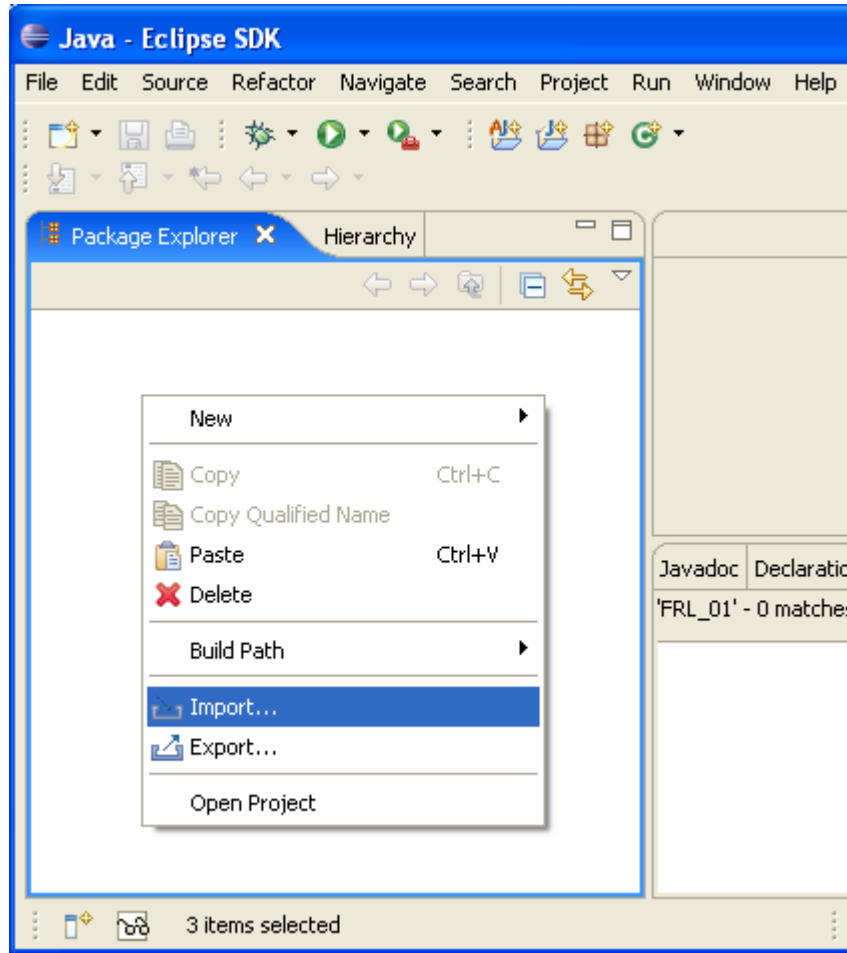


Figure 2- The Import command

- 4) A window similar to what represented in Figure 3 will be shown. Select the 'Existing Projects into Workspace' command in this window and press the 'Next' button on the bottom of the window.

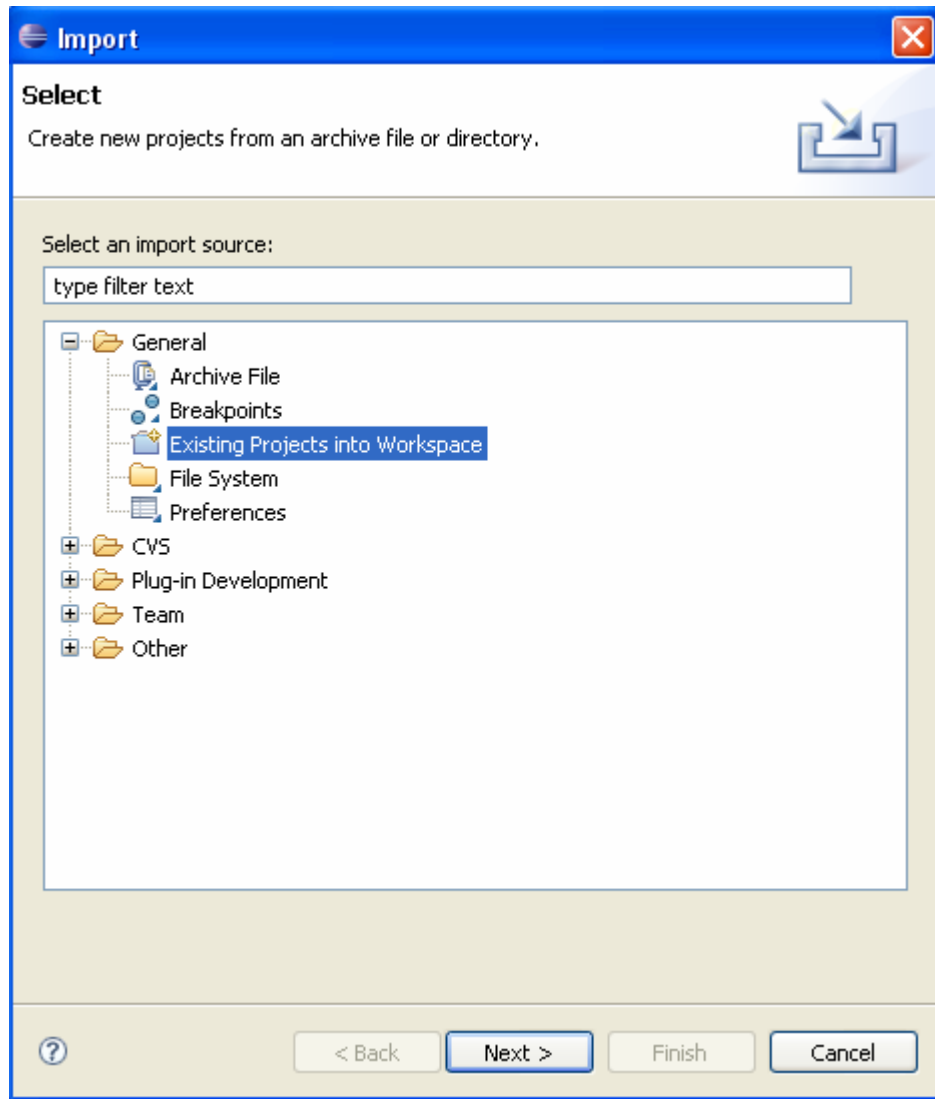


Figure 3- The window of Import wizard

- 5) A window similar to what represented in Figure 4 will be illustrated. In this window, select the choice 'Select root directory:' and choose 'C:\FUDA' as the root directory. Then, you will see the implementation project and the two sample applications on the bottom of this window. Make sure to select all of them and make sure to check the option 'Copy projects into workspace' off. Then, press the 'Finish' button. You will see that all three projects are imported into your workspace.

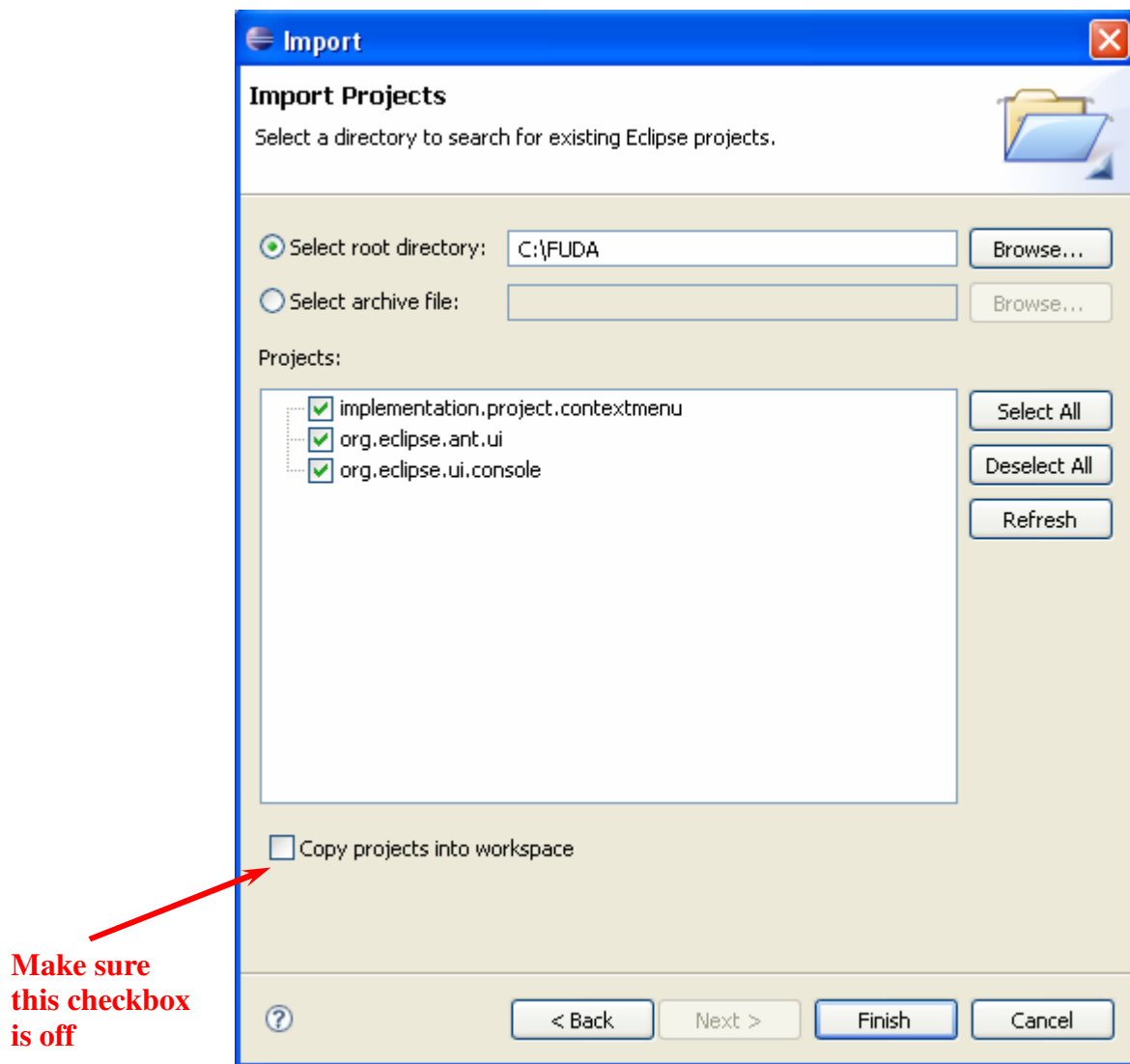


Figure 4- Selecting the projects to be imported into the workspace

2. Running the Eclipse Projects

- 1) Execute the 'Run...' command either from the 'Run' menu on the main menu or from the toolbar of the Eclipse environment (Figure 1).

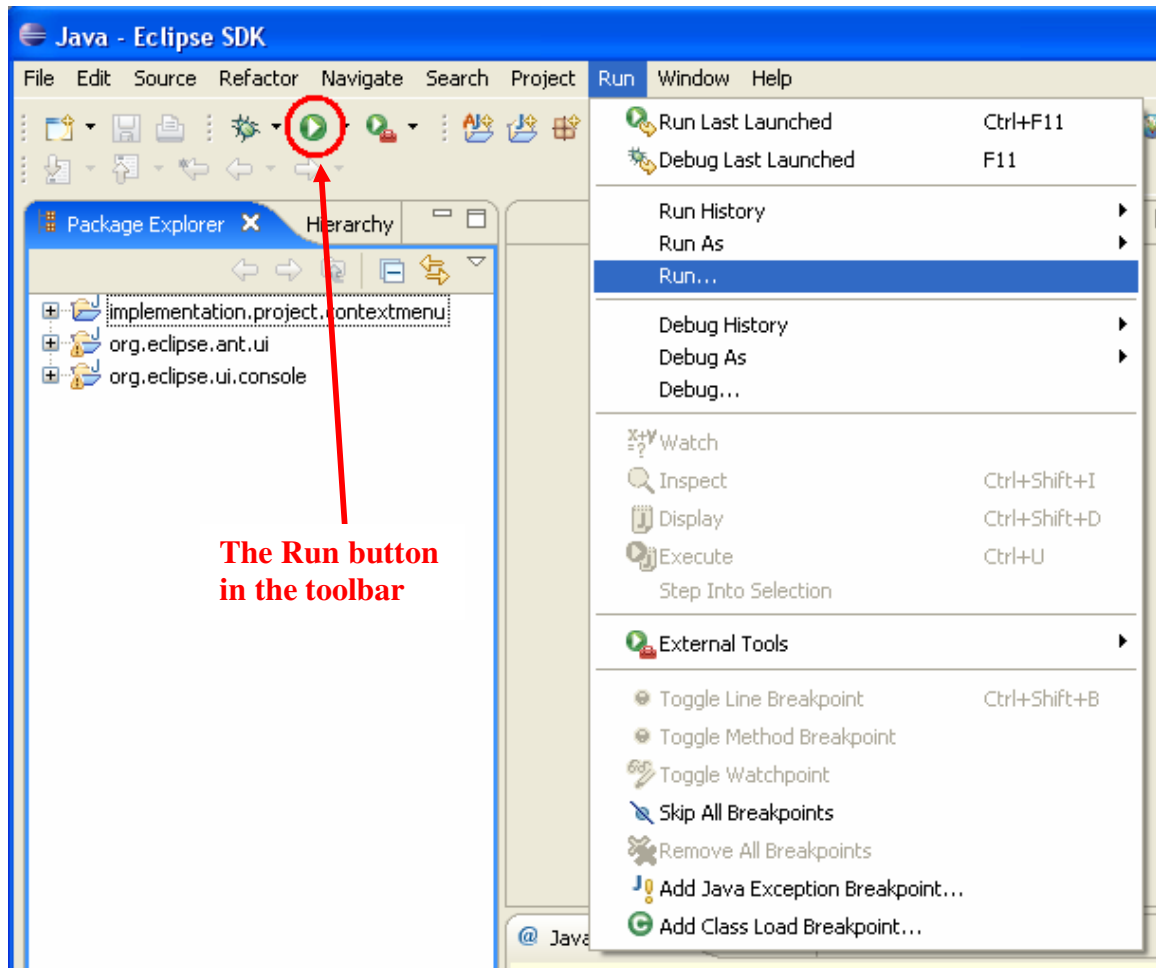


Figure 5- The Eclipse 'Run...' command

- 2) A window similar to what presented in Figure 6 will be illustrated. On the left side of this window, double click on the 'Eclipse Application'. A new eclipse configuration will be generated automatically. Then, press the 'Run' button on the bottom right corner of the window. You will see that a new instance of the Eclipse will be executed. The next time that you would like to run a new instance of the Eclipse, you do not require creating an Eclipse runtime configuration again and you can simply push the 'Run' button in the Eclipse toolbar as highlighted in Figure 5.

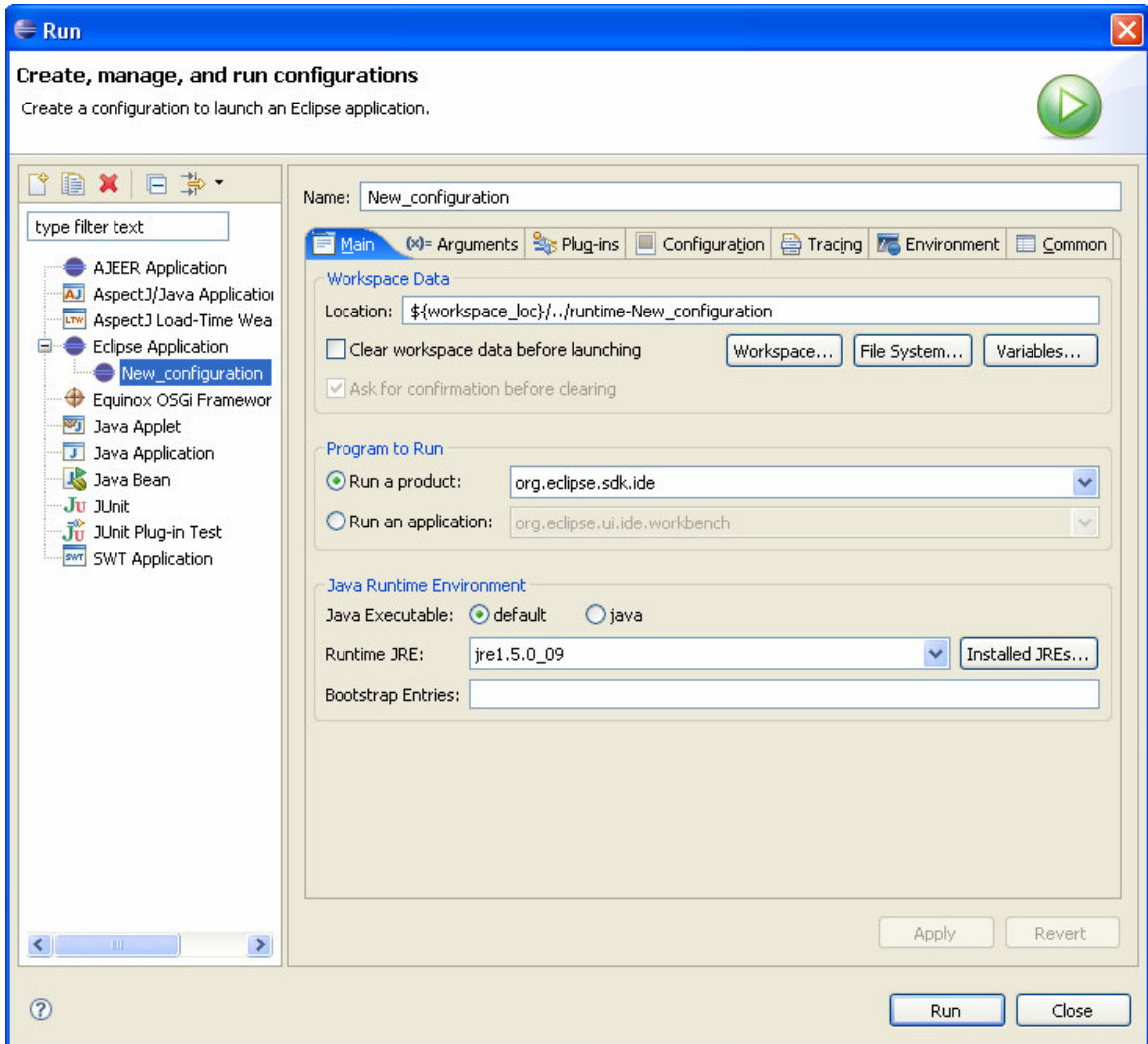


Figure 6- The Eclipse Run window

- 3) When the new instance of the Eclipse workbench is executed, you can see the Eclipse view you are working on (e.g., *Sample View*) by executing the command *Window* → *Show View* → *Other...* → *Sample Category* → *Sample View* in the new instance of the Eclipse as presented in Figures 7 and 8.

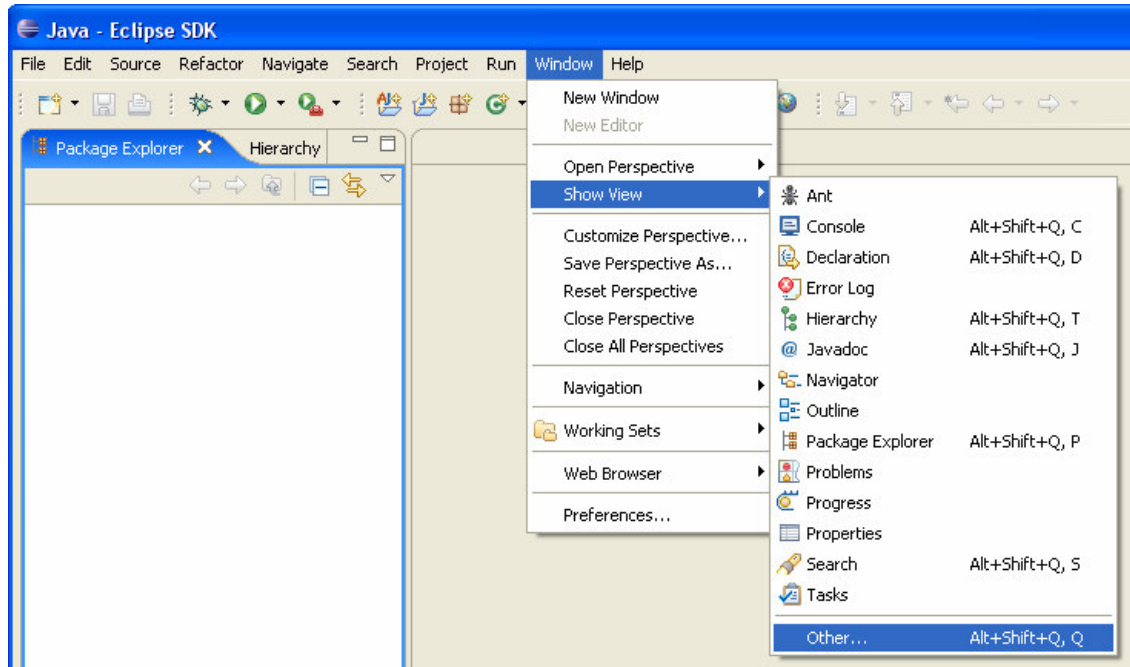


Figure 7- The 'Show View' Menu

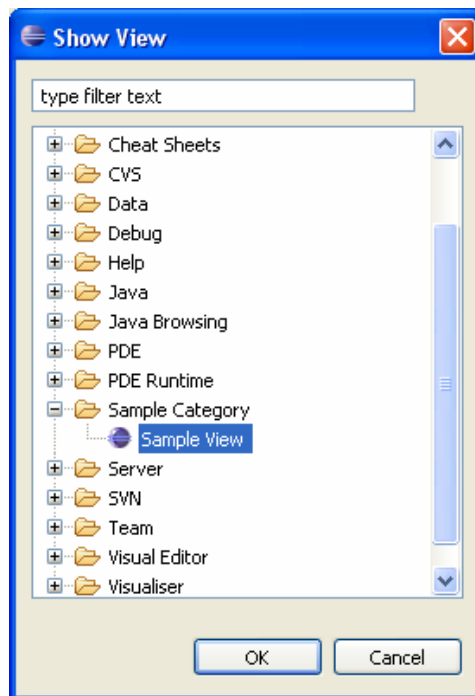


Figure 8- The 'Show View' window

3. Searching the Projects

- 1) You may search the projects in your workspace for a desired keyword by executing the 'Search...' command on the 'Search' menu in the main menu of the Eclipse (Figure 9).

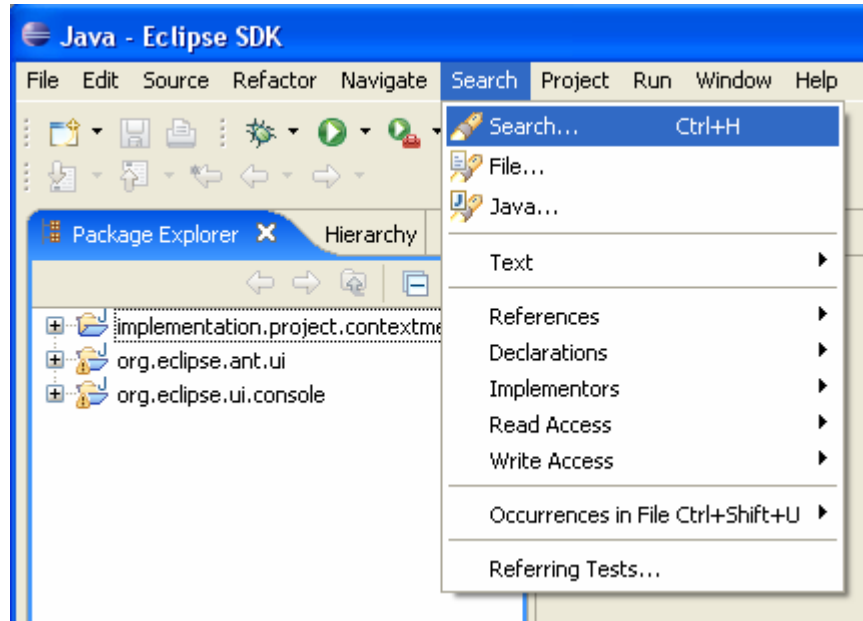


Figure 9- The 'Search' menu

- 2) A window similar to what presented in Figure 10 will be displayed. One can enter the desired keyword in this window and search the projects.

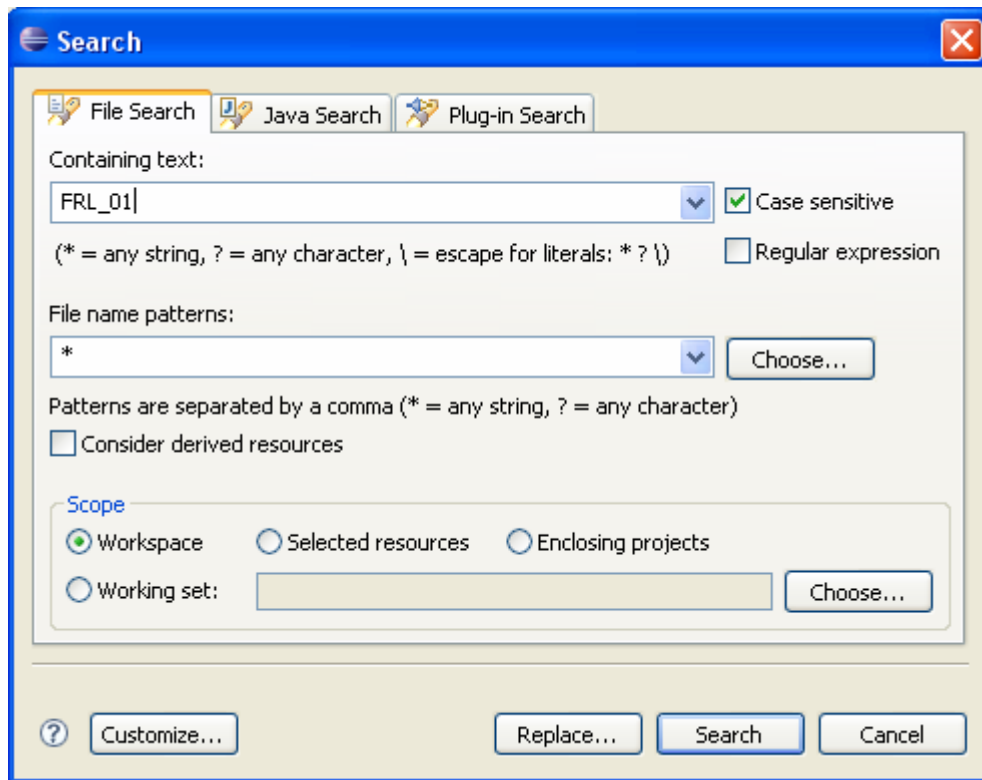


Figure 10- The Eclipse search window